



# COMSEWOGUE SCHOOL DISTRICT COVID-19 PROTOCOLS

LAST UPDATED: SATURDAY, AUGUST 22, 2020

## FACILITY MAINTENANCE

---

### DISINFECTING & CLEANING

Buildings disinfected to be resistant to viruses and spreading germs. High-touch areas will be cleaned & disinfected frequently.

- Electrostatic sprayers to spray all common areas, high traffic areas and all classrooms
- Wipes to be provided for each classroom
- Increased custodial support
- Hand sanitizers and hand-washing protocols will be followed
- Logs will be maintained that include the date, time and scope of cleaning
- HVAC Systems have upgraded filters and air exchange to ensure air circulation
- Windows for Fresh Air
- Hand sanitizers installed throughout building hallways and classrooms
- Signs installed throughout all facilities reminding and teaching about hand-washing and social distancing protocols



## TRANSPORTATION

---

### BUS / VAN



- All students and staff will wear masks
- All students will have their temperature checked and COVID-19 screening completed before boarding the bus
- Students will sit in marked seats based only on the drivers' discretion and board the bus from back to front
- Students will exit the bus from front to rear
- The bus will be quickly sanitized before heading back out for a second pick-up
- Same rules apply to vans as the buses, including masks, temperature checks and disinfecting protocols

### DROP-OFF

- Students will be dropped off at a designated entrance
- COVID-19 screening and temperature checks will be completed before allowing entrance to the building





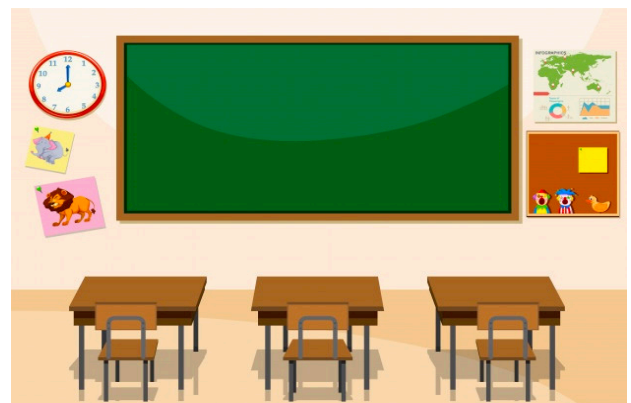
## ARRIVAL AT SCHOOL



- Comsewogue will adjust its schedule as to have more staggered arrival times to avoid overcrowding in the parking lot
- All parents, students and staff members will be required to wear masks during arrivals and in the hallways
- Parents will not be allowed to walk their child(ren) into the building. Temperatures and a COVID-19 screening will be completed before the student exits the car.
- A Comsewogue staff member will assist in maintaining 6 feet of distance, for temperature checks before entering the building
- If a student has a temperature exceeding 100.0F, or is showing any signs or symptoms of illness, that child will remain with their parent and go back home
- If the child has no temperature or signs of illness, they will walk directly to their classroom, maintaining 6 feet of distance from any other child or staff member
- Students will keep their backpacks next to them at their desks at all times

## CLASSROOMS

- Classrooms will be set up so that desks are 6 feet apart. As per DOH guidelines, students' desks are separated six feet apart measured student head to student head
- Students and teachers will be expected to wear masks at all times when they are unable to social distance in common areas
- When socially distanced at their desk, students may remove their mask
- Students will stay in their classrooms throughout the day and teachers will move from class to class as much as possible
- Students will have access to hand sanitizer in each classroom and hallways
- Students will be encouraged to wash their hand frequently throughout the day as well as sanitize hands periodically
- Windows in classrooms should be open whenever possible to allow fresh air in
- Social-Emotional concerns regarding COVID-19 will be addressed



## HALLWAYS

- 6 feet of separation between students should be maintained in the hallways whenever possible. Masks should be worn at all times in the hallway
- When leaving a classroom to use the bathroom or visit the nurse, students should be signing in and out of a log book
- We will not utilize lockers until further notice (TBD at the High School)

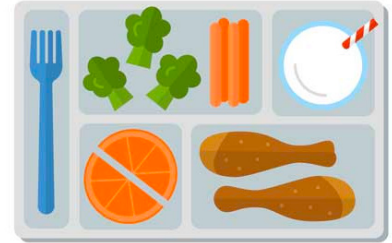




## LUNCH

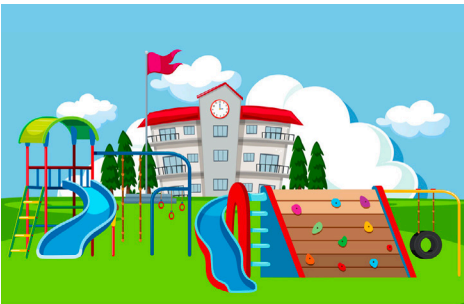
---

- Lunch will be in classrooms
- Brown bag lunches from home will be encouraged
- Garbages should be emptied after lunch and cans disinfected
- No sharing or exchanging of food will be allowed



## OUTDOOR RECESS

---



- Students will need fresh air and outdoor recess is encouraged
- No physical games or sports will be allowed, including basketball, soccer, football, etc.
- All students in the fields or on the pavement should maintain 6 feet of separation.
- While outside, if students maintain 6 feet of separation, masks may be removed
- All students will wear masks upon re-entering of any building
- Use of playground equipment will be introduced for student use as the school deems safe.

## PHYSICAL EDUCATION CLASS

---

- Students must maintain 6 feet of separation at all times in physical education class
- Exercises, walking and running will be some of the main activities
- All equipment will be sanitized between periods



## ISOLATION ROOM

---

- There is a planned isolation room in each building
- Anyone showing symptoms of COVID-19 during the school day will be placed in this room, not the nurse's office
- Any signs of illness and temperature of 100.0F or above, the student or teacher will be sent home immediately
- If there are concerns of COVID-19, the school nurse will inform the health department
- If someone in a classroom is tested and is COVID-19 positive, all parents of students in the classroom will be informed





## DISMISSAL

---

- Students will be lead outside by grade maintaining 6 feet of separation
- Parents are encouraged to drive up and pick up, not get out of their cars
- Masks will be worn at all times during dismissal
- Students remaining after the designated pickup time will be brought back inside for aftercare



## BEFORE & AFTERCARE

---

- Will be in each building of attendance
- 6 feet of separation will continue in classrooms during aftercare
- If students go outside for recess, follow recess procedures listed above
- Any student who needs to use the bathroom must sign a log book when leaving/returning



## AFTERCARE PICKUP

---

- No parents will be allowed to enter the building
- All pickups will be done in designated areas
- Child will be called to the front for pickup

## OUTSIDE VISITORS / MATERIAL DROP-OFF

---

- Visitors to our buildings will be suspended until further notice
- Any items dropped off for a student (lunch, books, etc.) will be left in the security vestibule and a staff member will bring the item(s) to the child

