

Looking Forward

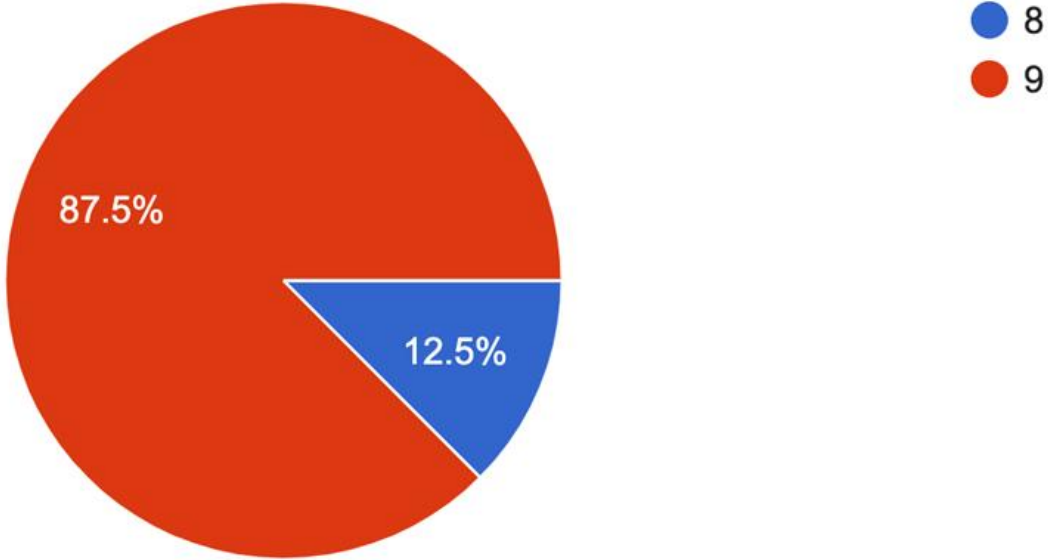
The Future of Comsewogue High School

Instruction

9-Period Day

How many instructional periods do you have per day?

48 responses



Benefits of a 9-Period Day

- **Average / Gifted Learners**
 - More opportunities to take AP / Dual-credit courses
 - Less conflicts in the master schedule
- **Struggling Learners**
 - More opportunities for Academic Support
 - More opportunities for Credit Recovery
- **All Learners**
 - More elective options
 - Time for lunch
 - AM/PM BOCES easier to schedule
 - Ability to take additional courses based on student interest / career pathways

What Would it Look Like?

- X-Time can exist in a 9-period day
- Start and end times can remain intact

Period	Time
1	7:10-7:50
2	7:53-8:33
3	8:36-9:16
4	9:19-9:59
5	10:02-10:42
6	10:45-11:25
7	11:28-12:08
8	12:11-12:51
9	12:54-1:34
X-Time	1:37-2:05

Approximate Cost

- 1,200 students x 1 additional class per student
- $1,200 \text{ students} / 27 \text{ students per class} = 44.4 \text{ sections}$
- 45 sections = 9 FTE
- 9 FTE @ \$90,000 (median cost w/benefits) = \$810,000

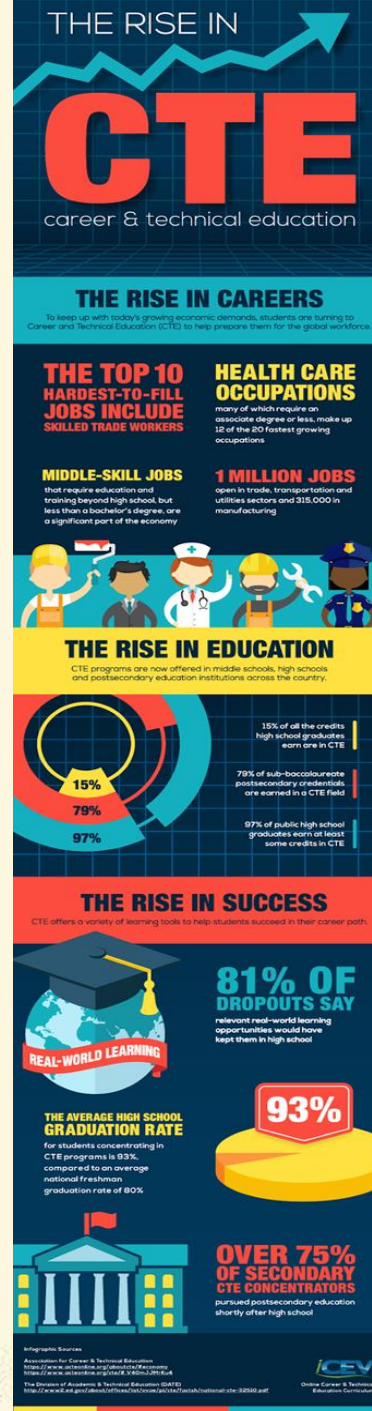
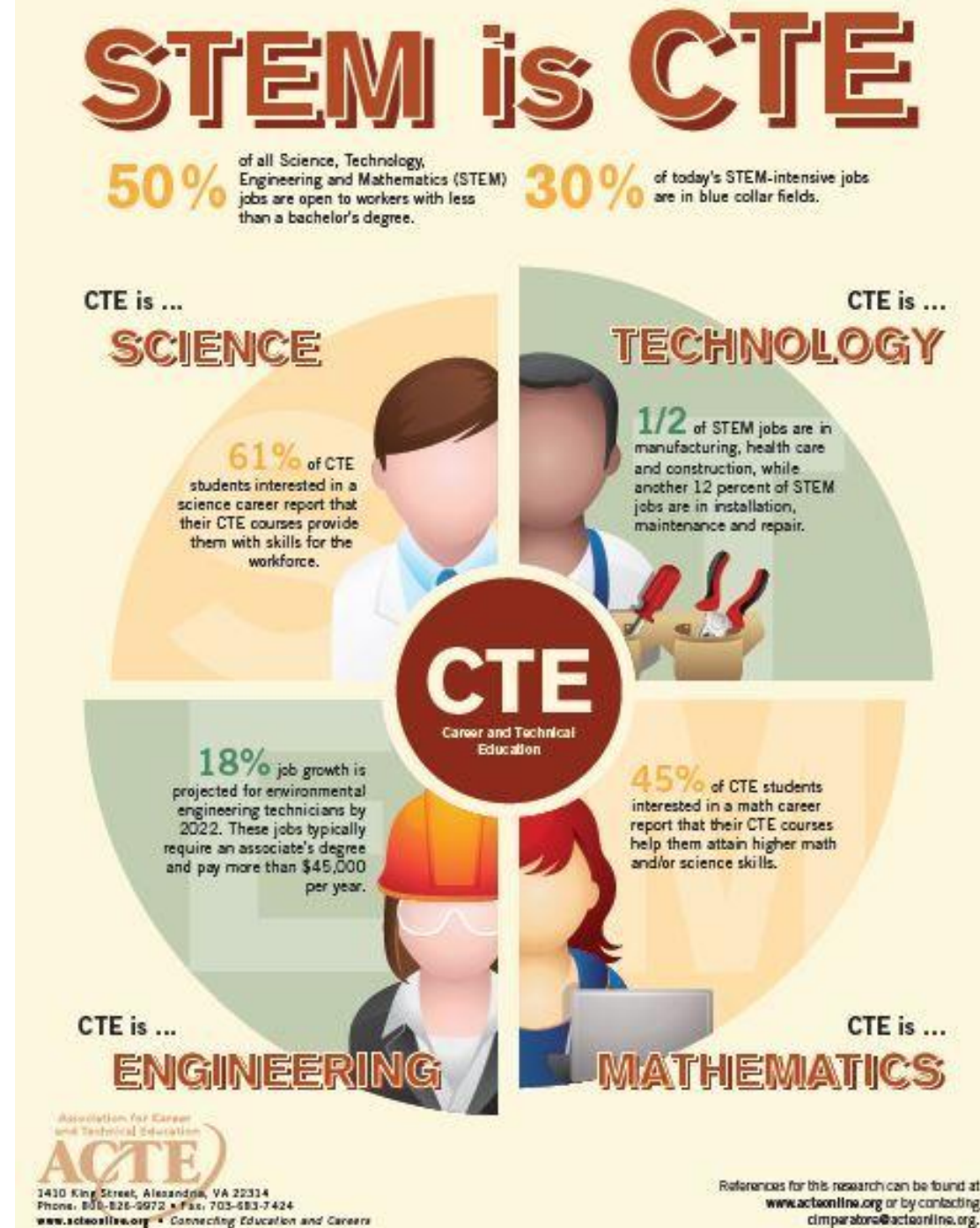
Facilities

STEAM Lab



The Vision

- To provide a space where students can build and create.
- Return to TRUE hands-on learning.
- New hub for Career Technical Education (CTE) in Comsewogue
- Accessibility for ALL types of learners



Potential Uses for a STEAM Lab

- Into to STEAM
- Engineering courses
- Research Courses
- Intel
- AP Capstone
- Art courses
- Robotics
- Cisco
- Traditional Tech
- MakerSpace
- PBL Lab

School Spirit

Marching Band: Pros & Cons

- **Pros**

- School spirit
- Potential Accolades for school
- Student scholarships

- **Cons**

- Cost
- Time
- Roughly 40% of our band students currently play a fall sport



Pep Band

- Can serve as our building blocks to create a marching band
- Re-energize school spirit
- Does not “require” marching instruments
- Spreads cost over multiple years
- Less time commitment
- Establish a presence at fall and possibly other sports seasons
- HOME FIELD ADVANTAGE



Thank You!

Contact us

Comsewogue High School
565 Bicycle Path
Port Jefferson Station, NY
11776

mmosca@comsewogue.k12.ny.us

tdornicik@comsewogue.k12.ny.us

rcassagne@comsewogue.k12.ny.us

<http://comsewoguehs.comsewogue.k12.ny.us/>

